

Eclipse Enclosures

Wall Mounting Access Enclosures (Type 4/12)

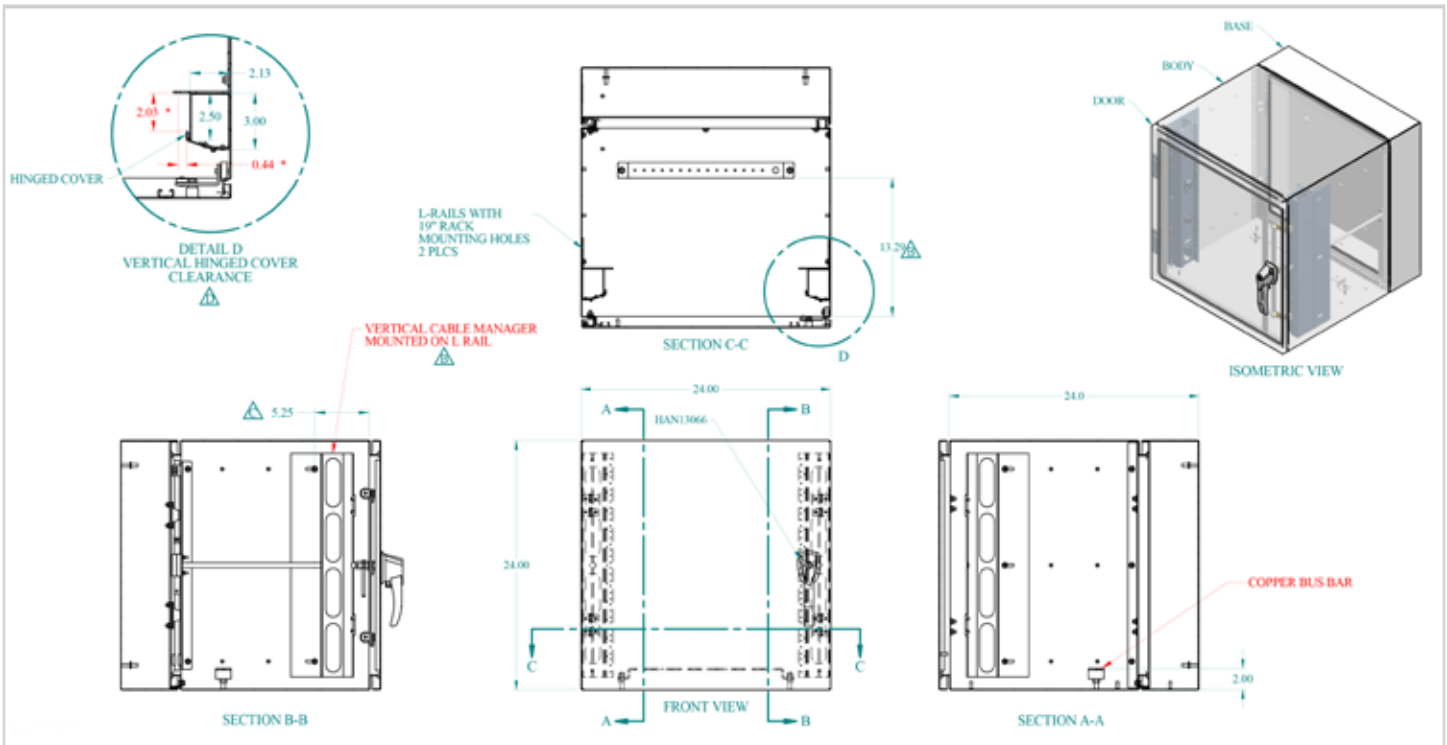


Application

Assembly suitable where integration of both electrical and data communication is required at municipal or plant floor locations.

Application

- Nema type 4/12 CSA and UL listed
- Double hinge system for front and rear accessibility
- 12 to 26 rack spacing available with galvanized rear inner panel
- 19" stainless steel mounting rails drilled and tapped 10/32
- LED light and door switch
- Integrated vertical cable managers
- Mild steel construction with RAL7032 finish (optional 304 stainless steel)



Access Enclosures Pre-Configured with Cable Management

N4 / 12 Mild Steel RAL7032 Finish

Part No.	Description	.STP	.DXF	.PDF
SP1504285	Dual Hinge Solid Door 12U - 24 x 24 x 24 with 19" Rails	x	x	x
SP1504286	Dual Hinge Solid Door 19U- 36 x 24 x 24 with 19" Rails	x	x	x
SP1504287	Dual Hinge Solid Door 26 U- 48 x 24 x 24 with 19" Rails	x	x	x

Access Enclosures Dual Hinge Solid Door

N4 / 12 Mild Steel RAL7032 Finish

Part No.	Description	.STP	.DXF	.PDF
EN4DH162415LG	Dual Hinge Solid Door - 7U 16 x 24 x 15 with 19" Rails	x	x	x
EN4DH162424LG	Dual Hinge Solid Door - 7U 16 x 24 x 24 with 19" Rails	x	x	x
EN4DH202415LG	Dual Hinge Solid Door - 10U 20 x 24 x 15 with 19" Rails	x	x	x
EN4DH202424LG	Dual Hinge Solid Door - 10U 20 x 24 x 24 with 19" Rails	x	x	x
EN4DH242415LG	Dual Hinge Solid Door - 12U 24 x 24 x 15 with 19" Rails	x	x	x
EN4DH242424LG	Dual Hinge Solid Door - 12U 24 x 24x 24 with 19" Rails	x	x	x
EN4DH362415LG	Dual Hinge Solid Door - 19U 24 x 24 x 15 with 19" Rails	x	x	x
EN4DH362424LG	Dual Hinge Solid Door - 19U 24 x 24 x 24 with 19" Rails	x	x	x
EN4DH482415LG	Dual Hinge Solid Door - 26U 24 x 24 x 15 with 19" Rails	x	x	x
EN4DH482424LG	Dual Hinge Solid Door - 26U 24 x 24 x 24 with 19" Rails	x	x	x

Access Enclosures Dual Hinge Window Door

N4 / 12 Mild Steel RAL7032 Finish

Part No.	Description	.STP	.DXF	.PDF
EN4DH162415WLG	Dual Hinge Window Door - 7U 16 x 24 x 15 with 19" Rails	x	x	x
EN4DH162424WLG	Dual Hinge Window Door - 7U 16 x 24 x 24 with 19" Rails	x	x	x
EN4DH202415WLG	Dual Hinge Window Door - 10U 20 x 24 x 15 with 19" Rails	x	x	x
EN4DH202424WLG	Dual Hinge Window Door - 10U 20 x 24 x 24 with 19" Rails	x	x	x
EN4DH242415WLG	Dual Hinge Window Door - 12U 24 x 24 x 15 with 19" Rails	x	x	x
EN4DH242424WLG	Dual Hinge Window Door - 12U 24 x 24 x 24 with 19" Rails	x	x	x
EN4DH362415WLG	Dual Hinge Window Door - 19U 24 x 24 x 15 with 19" Rails	x	x	x
EN4DH362424WLG	Dual Hinge Window Door - 19U 24 x 24 x 24 with 19" Rails	x	x	x
EN4DH482415WLG	Dual Hinge Window Door - 26U 24 x 24 x 15 with 19" Rails	x	x	x
EN4DH482424WLG	Dual Hinge Window Door - 26U 24 x 24 x 24 with 19" Rails	x	x	x

Access Enclosures Dual Hinge Solid Door - Stainless Steel

N4 / N4X / 12 Stainless Steel 304 with Brush Finish

Part No.	Description	.STP	.DXF	.PDF
SP1504288	Dual Hinge Solid Door - 26U 48 x 24 x 24 with 26U 19" Rails	x	x	x

Hammond Manufacturing Company Limited
 394 Edinburgh Rd North, Guelph, Ontario, N1H 1E5
 P. (519) 822-2960 | F. (519) 822-0715 | QC P. (514) 343-9010